

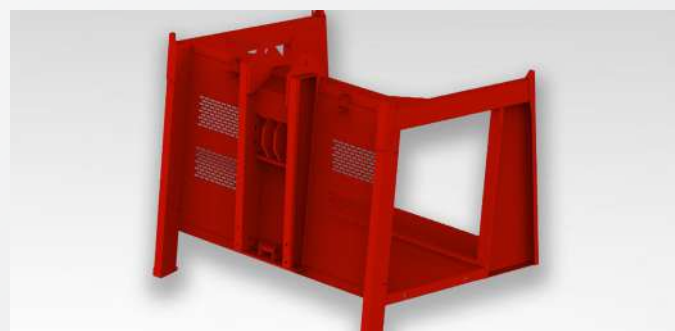


CONCEPTION DESIGN: STRENGTHS OF THE SILAGE FEEDERS



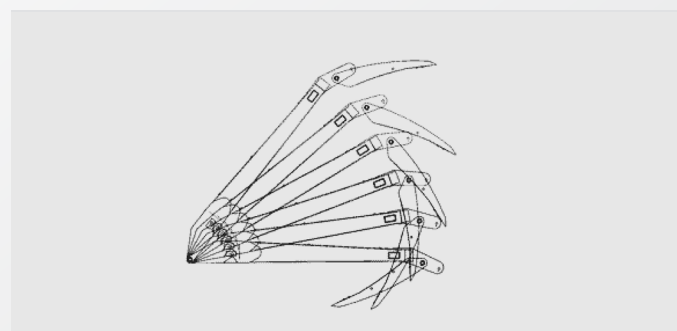
MONOBLOC CENTRAL ARM

Large-sized, the central monobloc arm pivots on a thru axle guided by two self-locking bushings.



SINGLE PIECE NON-DEFORMABLE BODY SHELL

Mechanically welded body shell, with reinforcing gussets in the upper part. The inner sides are perfectly smooth to avoid corrosion.



ARTICULATED CLAW

With its optimized kinematic, silage feeding height is prioritized and the tank's loading is maximized.



DRIVE

Both the feed rotor and the belt are driven by a powerful hydraulic motor. Speed stays proportional, guaranteeing a regular distribution.



DISTRIBUTION OPENING

The opening and closing of the 2 shutters of the distribution block are simultaneous. They are driven by a double-effect actuator with independent commands.



ADJUSTABLE DISTRIBUTION BLOCK

Can be mounted on the right or left side of the machine. The opposite panel to the distribution is mobile and can be opened, for example, to distribute entire beetroots.



4 ELEMENTS DISTRIBUTOR

Fixed on an adjustable support (height, length), always hand reaching. Electric commands are optionnal.



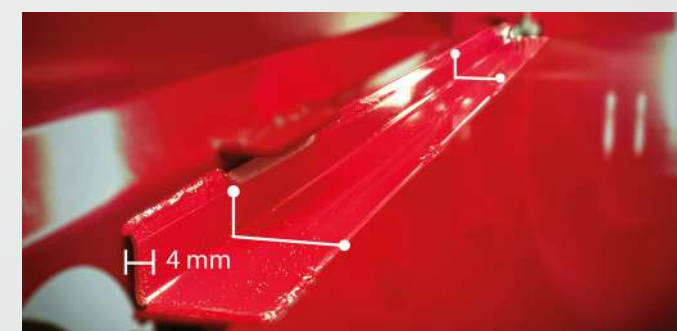
VERSATILE FEED ROTOR

Perfect for grass and corn silage. The rotation way can be reversed (right/left).



HIGH RESISTANCE BOTTOM BED CONVEYOR

The bottom bed conveyor is equipped with Ø10mm marine chains, with forward or backward reverser.



WEARING PLATES

Two 4mm-thick wearing plates are placed under the whole length of the chain, ensuring a better lifetime to the machine.



CLEANLINESS TRAP

The cleanliness trap is self-cleaning and offers more comfort to the user. Mud flaps are optional.



3 POINTS LINKAGE

Semi-automatic 3-point hitch for easy hooking and unhooking.